



# INSTALLATION INSTRUCTIONS



2015 MASERATI GHIBLI 3.0L | PART NO. 19250

## BILL OF MATERIALS:



- 1. INLET PIPE ASSEMBLY D/S
- 2. INLET PIPE ASSEMBLY P/S
- 3. MUFFLER ASSEMBLY D/S
- 4. MUFFLER ASSEMBLY P/S



WEAR SAFETY GLASSES



READ INSTRUCTIONS THOROUGHLY BEFORE INSTALLING PRODUCT

## SHOP SUPPLIES:



SPRAY LUBRICANT

To ease removal of existing exhaust components (especially on older vehicles) spray penetrating lubricant on all fasteners and hangers/insulators that will be loosened or removed and let soak before disassembly.

## HARDWARE KIT:

- 1.[2] 2.36" Clamp
- 2.[2] 3.00" Clamp
- 3.[4] .250-20 x 1.00 BHCS
- 4.[4] .250-20 Nylok Nut
- 5.[4] .250 Flat Washer
- 6.[1] Brace

## MINIMUM REQUIRED TOOLS:



15mm  
13mm



Hanger Tool  
(Or Pry Bar)

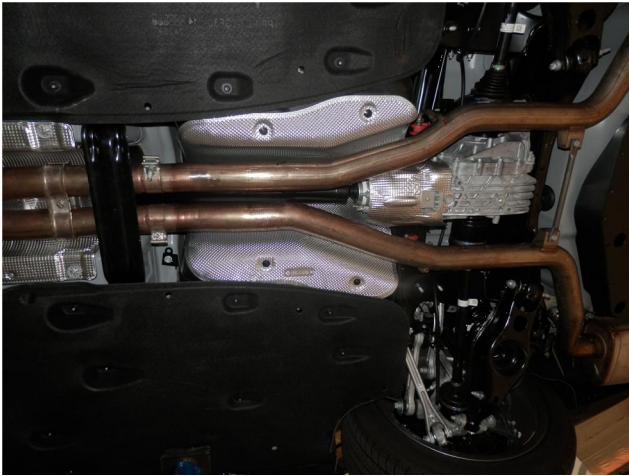
## MAGNAFLOW RECOMMENDS PROFESSIONAL INSTALLATION ON ALL THEIR PRODUCTS



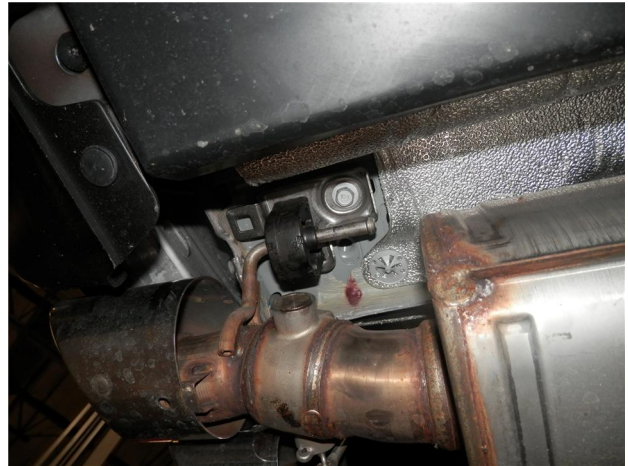
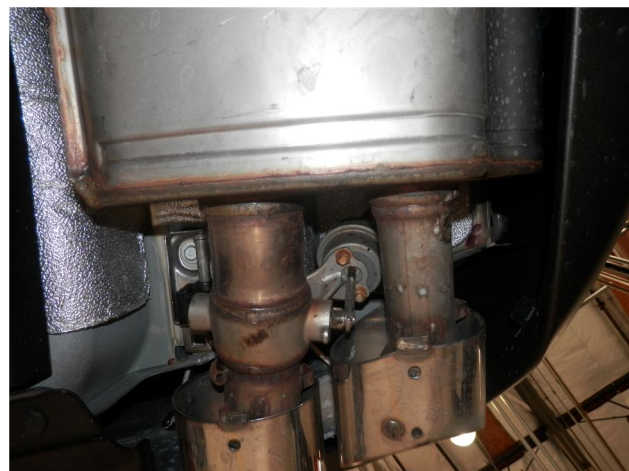
**WARNING:** When working on, under, or around any vehicle exercise caution. Please allow the vehicle's exhaust system to cool before removal, as exhaust system temperatures may cause severe burns. If working without a lift always consult vehicle manual for correct lifting specifications. Always wear safety glasses and ensure a safe work area. Serious injury or death could occur if safety measures are not followed.

**ATTENTION:** Always install any supplied band or U-bolt clamps to the proper torque specifications of 40-45 ft-lbs for band clamps and 30-35 ft-lbs for U-bolt clamps. Over tightening will result in the clamp breaking and will NOT be warranted by MagnaFlow.

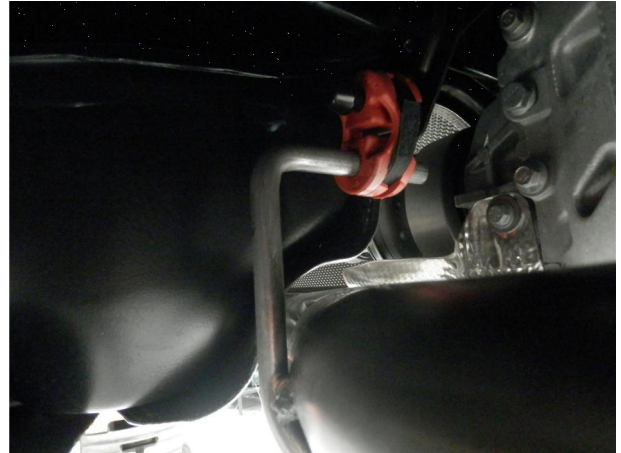
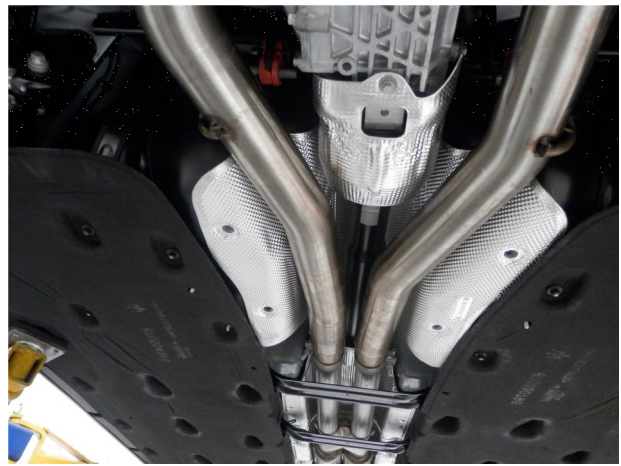
## INSTALLATION INSTRUCTIONS



**Step 1.** Begin removal of the OEM exhaust system by loosening the two 3.00" clamps located behind the rear black cross brace.

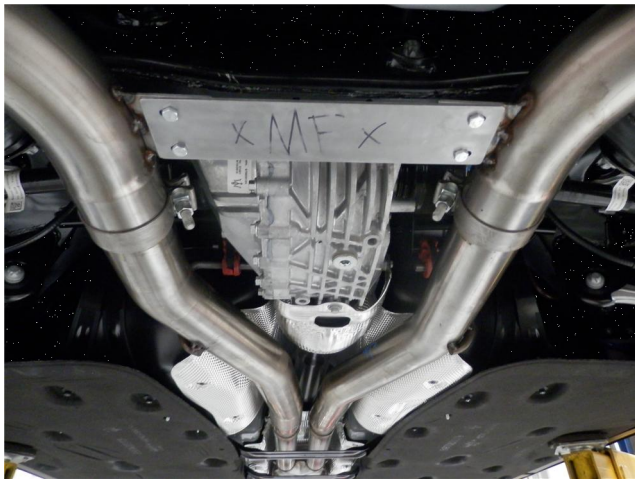
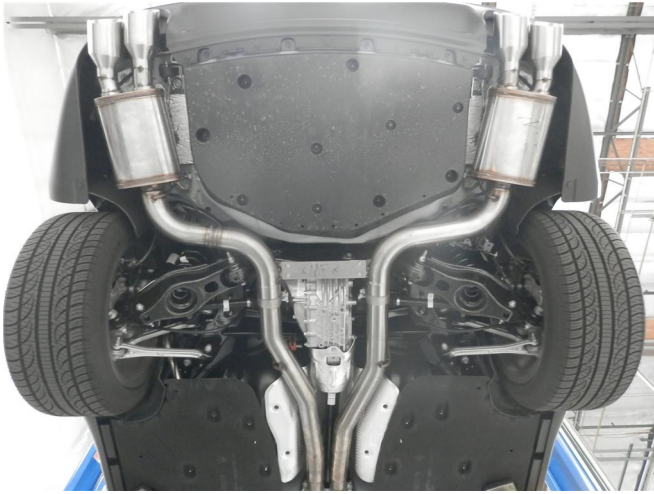


**Step 2.** Next, remove the tubular support brace connecting the right and left exhaust, remove the right and left vacuum line from the exhaust valves (plug and zip tie out of the way, these will NOT be re-used), remove hangers from rubber insulators and drop the exhaust. Retain rubber insulators as they will be re-used on the new system.



**Step 3.** Begin installation of the new system by attaching the Driver and Passenger side Inlet Pipe Assemblies to the OEM outlets using the Supplied 2.36" clamps. Fit the hangers into the rubber insulators. Leave all clamps loose until final assembly.

## INSTALLATION INSTRUCTIONS



**Step 4.** Next, install the Driver and Passenger side muffler assemblies to the outlets of the Inlet assemblies using the supplied 3.00" clamps and fit the hangers into the rubber insulators. Loosely Fit the Magnaflow cross brace using the supplied fasteners.



**Step 5.** . Once a final position has been chosen for the new exhaust system, evenly tighten all clamps from front to rear using the torque specifications on page one of the instructions. Inspect all fasteners after 25-50 miles of operation and re-tighten if necessary.