

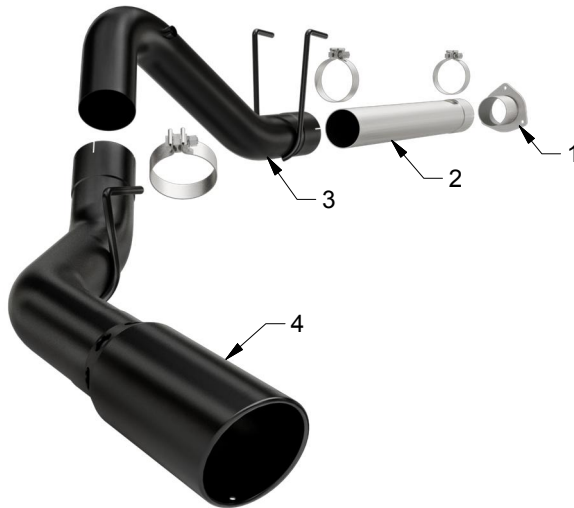


INSTALLATION INSTRUCTIONS



2017 FORD F-250/F-350 6.7L BLACK | PART NO. 17060

BILL OF MATERIALS:



- 1. INLET PIPE ASSEMBLY
- 2. 31" EXTENSION PIPE
- 3. OVER AXLE PIPE ASSEMBLY
- 4. TAIL PIPE ASSEMBLY



WEAR SAFETY GLASSES



READ INSTRUCTIONS THOROUGHLY BEFORE INSTALLING PRODUCT

SHOP SUPPLIES:



SPRAY LUBRICANT

To ease removal of existing exhaust components (especially on older vehicles) spray penetrating lubricant on all fasteners and hangers/insulators that will be loosened or removed and let soak before disassembly.

HARDWARE KIT:

- 1. [3] 4.00" Clamp

MINIMUM REQUIRED TOOLS:



15mm



Hanger Tool (Or Pry Bar)



Cutting Device

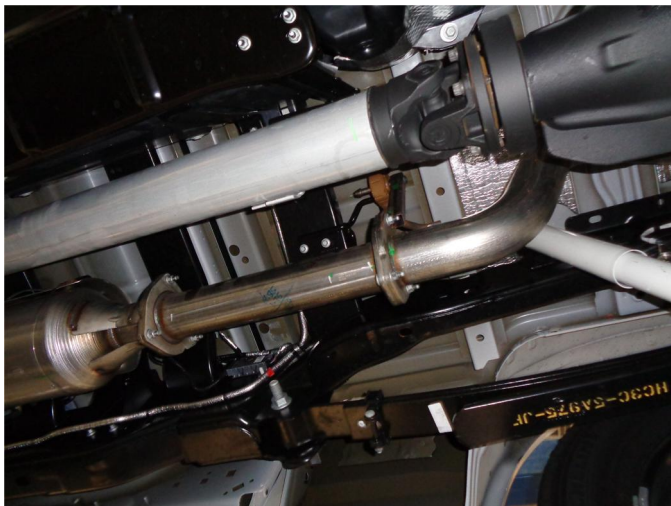
MAGNAFLOW RECOMMENDS PROFESSIONAL INSTALLATION ON ALL THEIR PRODUCTS



WARNING: When working on, under, or around any vehicle exercise caution. Please allow the vehicle's exhaust system to cool before removal, as exhaust system temperatures may cause severe burns. If working without a lift always consult vehicle manual for correct lifting specifications. Always wear safety glasses and ensure a safe work area. Serious injury or death could occur if safety measures are not followed.

ATTENTION: Always install any supplied band or U-bolt clamps to the proper torque specifications of 40-45 ft-lbs for band clamps and 30-35 ft-lbs for U-bolt clamps. Over tightening will result in the clamp breaking and will NOT be warranted by MagnaFlow.

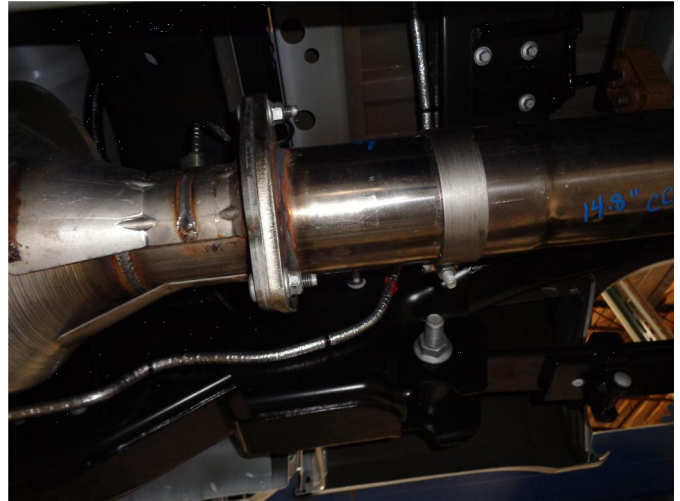
INSTALLATION INSTRUCTIONS



Step 1. To remove the OEM exhaust remove the O2 sensor from the over axle pipe. Unbolt the extension pipe assembly from from the DPF outlet flange and the OE over axle pipe. Working front to rear disengage all welded hangers from the rubber insulators. Be sure to retain all mounting hardware as it will be needed to install your new MAGNAFLOW system.

WHEELBASE	CAB/BED	MF INLET PIPE	MF EXTN. PIPE
176.00 in	CC/LB	NO TRIM	NO TRIM
159.8"	CC/SB	NO TRIM	CUT TO 15"
164.2"	EC/LB	NO TRIM	CUT TO 19"
148.00 in	EC/SB	NO TRIM	DO NOT USE
141.6"	SC/LB	CUT TO 4"	DO NOT USE

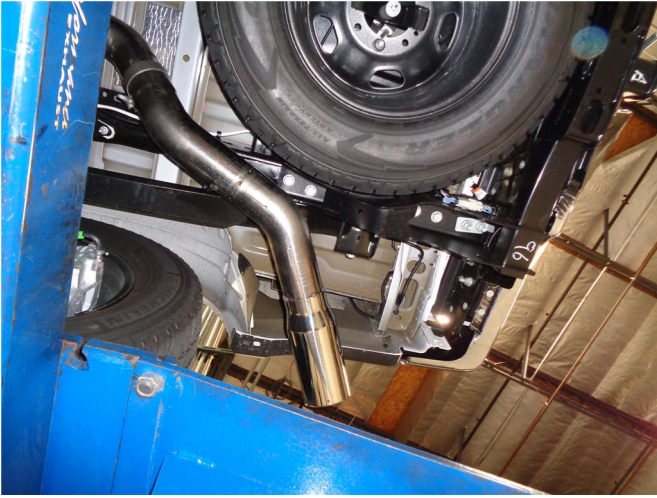
Step 2. Determine the overall length of the Inlet Pipe Assembly and the 31" Extension Pipe, if required using the chart above. The measurements are what the overall pipe lengths need to be after cutting.



Step 3. Begin installation by loosely attaching the Inlet Pipe Assembly to the OEM flange outlet using the OEM hardware. Loosely attach the Extension Pipe, if needed, using the supplied clamp.



Step 4. Loosely install the Over Axle Pipe Assembly using the supplied clamp. Locate the welded hangers to the rubber insulators.



Step 5. Loosely install the Tail Pipe Assembly using the supplied clamp. Engage the welded hanger to the rubber insulator.



Step 6. Reattach the O2 sensor.



Step 7. Once a final position has been chosen for the new exhaust system, evenly tighten all clamps from front to rear using the torque specifications on page one of the instructions. Inspect all fasteners after 25-50 miles of operation and re-tighten if necessary.