



INSTALLATION INSTRUCTIONS

NESS-COMP | TOURING®

MINIMUM REQUIRED TOOLS:



FLAT HEAD
SCREWDRIVER



1/2", 9/16", 14mm,
7/8" or 22mm
WRENCHES



5/16", 1/2",
9/16" SOCKETS
AND RATCHET



SNAP RING
PLIERS

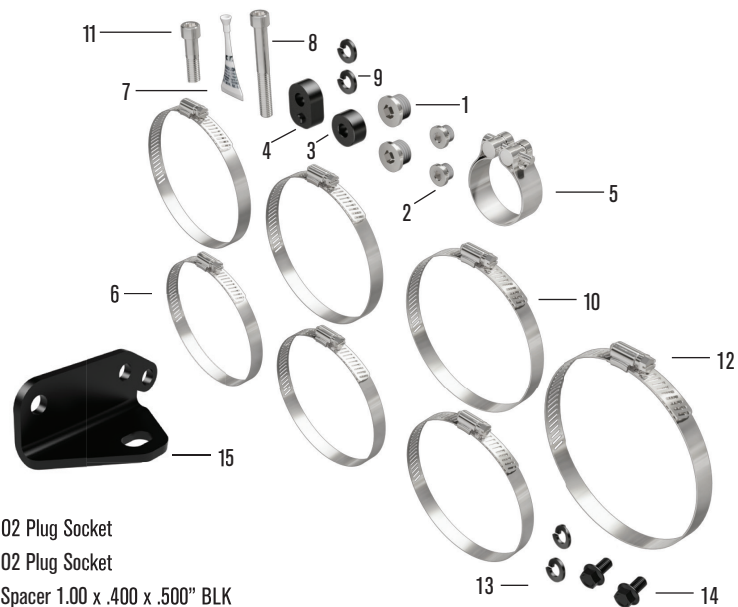


3/16", 1/4",
5/16" ALLEN
WRENCH



TORQUE
WRENCH

INCLUDED HARDWARE:



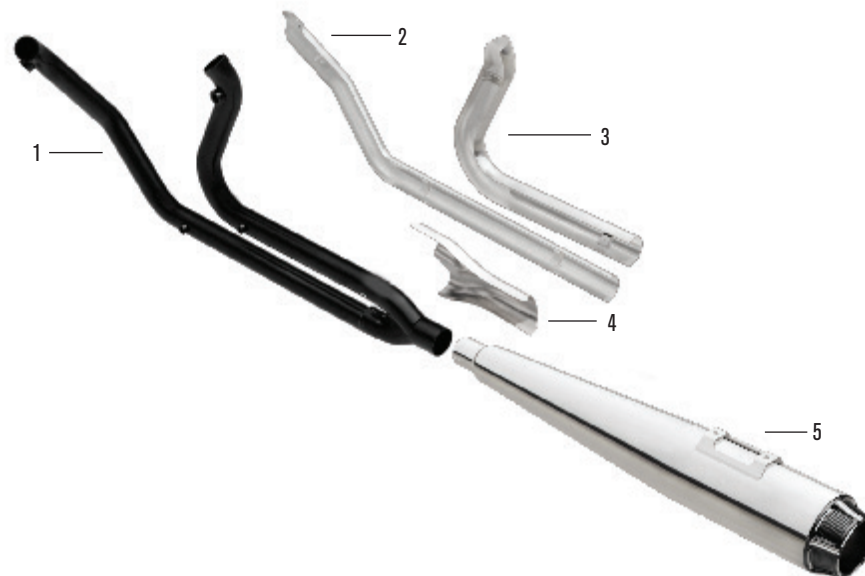
- | | |
|---|--|
| 1. (2) O2 Plug Socket | 10. (3) Clamp 2.00 Band HS SS |
| 2. (2) O2 Plug Socket | 11. (1) Screw SHCS 3/8-16x1.5 Zinc |
| 3. (1) Spacer 1.00 x .400 x .500" BLK | 12. (1) Clamp Band HS SS SAE 36 X .50 |
| 4. (1) Spacer Assy - Floorboard Touring BLK | 13. (2) Washer Split Lock 5/16 blk |
| 5. (1) Clamp 2.25 Band Muffler SS | 14. (2) Bolt Hex flng blk 5/16 - 18 x 0.50 |
| 6. (3) Clamp 1.75 Band HS SS | 15. (1) Trans Bracket (Fits 95-06 models) |
| 7. (1) Threadlocker - Locktite Red 0.5 ml | |
| 8. (1) Screw SHCS 3/8-16x3.00 Zinc | |
| 9. (2) Washer Split Lock 3/8" GR5 CLR ZINC | |



SYSTEM SHOWN IN CHROME

CHROME PART# 7211503

BLACK PART# 7212304



- | | |
|-----------------------|----------------------------|
| 1. HEAD PIPE ASSEMBLY | 4. Y COLLECTOR HEAT SHIELD |
| 2. FRONT HEAT SHIELD | 5. MUFFLER |
| 3. REAR HEAT SHIELD | |



IMPORTANT INFORMATION

1. Register your new product at www.magnaflow.com/motorcycle/register.
2. When installing new MagnaFlow exhaust systems, be sure your hands are clean and free of oil, lotion or similar products. After installation is completed and before starting the motorcycle, thoroughly clear the new exhaust system with a clean, soft cloth and cleaning solvent that leaves no residue. Debris, residue or fingerprints left on the system may cause damage to the finish. Damage or discoloration to finish is not covered by warranty.
3. MagnaFlow advises replacing worn or damaged gaskets.
4. Make sure there are no exhaust leaks at the junctions and connecting points of the exhaust pipes and/or mufflers, or at the cylinder.
5. Leaks due to improper installation may cause the engine to overheat. This may cause discoloration.

Maximize your motorcycles performance and efficiency by complementing your new MagnaFlow exhaust system with a fuel tuner management system and or EFI remapping. Remapping is suggested to optimize performance while reducing the possibility of damage to your motor or new exhaust system.

NOTICE: MagnaFlow makes every effort to design exhaust systems which enhance the riding experience. However, due to restraints on some models, tolerances, ground and or cornering clearance may not improve and in some cases may be reduced. Adjustments to the motorcycle not listed here may be required for proper fitment. Be sure to carefully follow all installation instructions.

DISCLAIMER: NOT LEGAL FOR SALE OR USE IN CALIFORNIA ON ANY POLLUTION CONTROLLED MOTOR VEHICLES.

Some part numbers not available in California. The California Air Resources Board (CARB) does not permit the use of aftermarket emission-related part(s) that alter the performance of OEM emission-related devices unless CARB has issued an Executive Order. Check Federal, State and local laws for compliance.

Platforms, model names and descriptions including but not limited to Dyna®, Softail®, Sportster®, Touring®, Fat Boy®, Road Glide®, Heritage® and Harley® are registered trademarks of The Harley-Davidson Motor Company®, Milwaukee, WI, U.S.A.

CALIFORNIA EMISSIONS NOTICE

Some part numbers are not legal for sale or use in California. The California Air Resources Board (CARB) does not permit the use of aftermarket emission-related part(s) that alter the performance of OEM emission-related devices unless CARB has issued an Executive Order, other than on racing vehicles on closed courses. Check your local laws and manufacturer's information.

In California, the sale and installation of motorcycle aftermarket exhaust parts that may have the potential to impact emissions are regulated by the California Air Resources Board (CARB). The sale, installation and use of emissions related aftermarket exhaust parts on motorcycles is prohibited unless the exhaust part is either an OEM "replacement part" as defined by the state of California, or is specifically permitted for use by an Executive Order issued by CARB.

(1) Replacement Parts

Replacement Parts are aftermarket parts that are functionally identical to the stock OEM part they are intended to replace, and therefore do not adversely impact emissions when installed and in use. Replacement Parts are permitted for sale, installation and use on motorcycles used on or off the public highways in California. For motorcycles, these parts fall in to two categories:

CALIFORNIA EMISSIONS NOTICE (CONT.)

* No emission control - If the motorcycle's stock exhaust system does not contain any emission control components, then an aftermarket exhaust part is a Replacement Part and no EO is required.

* Upstream emission control devise. If the motorcycle's stock exhaust system contains a catalytic converter, then an aftermarket exhaust part positioned downstream from the catalytic converter (i.e. cat-back) is a Replacement Part as long as it does not remove, replace or adversely affect any emission control equipment originally attached to the stock exhaust system.

(2) Executive Order Parts

All exhaust parts that incorporate or impact any emission control devise require a CARB issued Executive Order allowing the parts to be advertised, sold, offered for sale and installed in California, pursuant to specific application.

For more information please visit <http://www.arb.ca.gov/msprog/aftermkt/motorcycle1/motorcycle1.htm>

WARRANTY:

MagnaFlow motorcycle exhaust products, including Arlen Ness by MagnaFlow exhaust systems, are warranted against defects in material and/or assembly workmanship only for a period of 1 year from invoice date. This warranty is void if the product is not installed properly on the vehicle for which it is designed. This warranty does not apply to any product which has been installed on any commercial or racing vehicle or which has been improperly installed, modified, altered or subjected to misuse or damage from accidents; including excessive heat. Also, cost of labor and any additional parts or components required to complete installation of a replacement product are not covered by this warranty; including coatings, paints and/or finishes, flaws or rust. MagnaFlow including Arlen Ness by MagnaFlow exhaust systems are designed to fit and operate on original OEM motors and chassis with no modifications of any type on the motorcycle.

Proof of purchase from an authorized retailer must accompany any warranty claim. The original product that is deemed to be under warranty may only be returned and/or exchanged for a product of the same part number. No other warranty, expressed or implied (including merchantability), applies to the products, nor is any person including the manufacturer authorized to assume any other warranty. Dealers and distributors are not authorized to make warranty judgments or claims regarding MagnaFlow products. The manufacturer does not assume any responsibility for any consequential damages occasioned by the product, or inconvenience or interruption in any operation, service or shipping. All approved warranty returns must be accompanied by a return authorization number. Parts returned to MagnaFlow without a return authorization and accompanying documentation may be refused. No parts will be accepted with freight due.

This warranty gives you specific legal rights. You may also have other rights which may vary from state to state. Some states do not allow the exclusion or limitation of incidental or consequential damages, so the above limitation or exclusion may not apply to you.

The warranties set forth herein are exclusive and, unless otherwise required by applicable law, no other warranties are made by MagnaFlow or are authorized to be made with respect to the product.



STOCK EXHAUST REMOVAL INSTRUCTIONS

PLEASE NOTE:

Several MagnaFlow motorcycle exhaust systems are designed to be used with O2 and non-O2 sensor applications. If your motorcycle does not come equipped with O2 sensors, simply skip any steps referring to them.

Also, Make sure to retain all factory hardware and brackets as they may be used during the installation process.

1. Locate and remove the two D-ring pins inside of each saddle bag. (Figure 1)



Fig.1a



Fig.1b

2. Remove each saddle bag by carefully lifting them up and away from the motorcycle. (Figure 2)



Fig.2

3. Locate and loosen the factory clamp at the inlet side of the OEM mufflers. (Figure 3)



Fig.3

4. Remove the two 5/16 inch bolts and washers attaching each muffler to the saddle bags mounts. (Figure 4)



Fig.4

5. Slide each muffler towards the rear of the bike to remove it from the head pipe assembly.
Note: Penetrating lubrication may be necessary to assist in the removal of the muffler. (Figure 5)

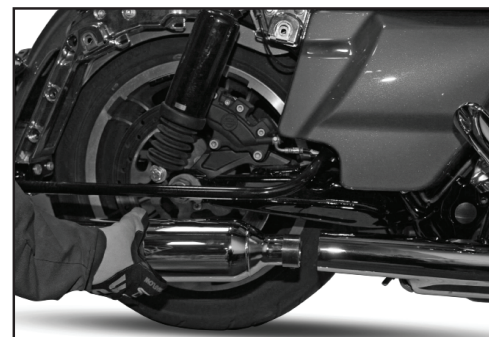


Fig.5

6. Remove the mid section and rear cylinder heat shields by removing the heat shield clamps. (Figure 6)



Fig.6a



Fig.6b



STOCK EXHAUST REMOVAL INSTRUCTIONS

7. Locate and remove the two mounting bolts holding the right floorboard. (Figure 7)



Fig.7a

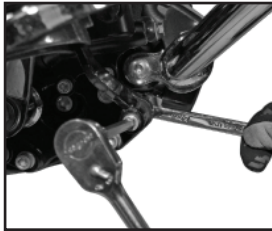


Fig.7b



Fig.7c

8. Remove the front cylinder heat shield by removing the heat shield clamps. (Figure 8)



Fig.8

9. Locate and remove the left side head pipe mounting bolt and loosen the connector clamp



Fig.9

located underneath the motorcycle. (Figure 9)

10. Remove the left side head pipe assembly.

11. Locate and remove the four exhaust flange mounting nuts on each cylinder. (Figure 10)



Fig.10a



Fig.10b

12. Remove the head pipe assembly mounting nut and head pipe assembly. (Figure 11)

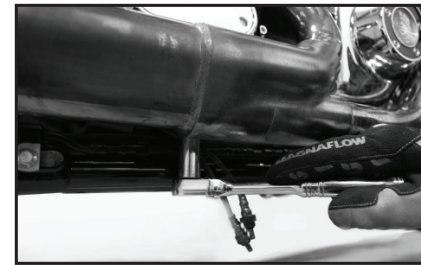


Fig.11

13. Remove the two O2 sensors from the head pipe assembly. To insure continued performance from your stock O2 sensors, keep any fingerprints, debris, or chemicals away from the tips.

14. Locate and remove the two mounting bracket screws and mounting bracket. (Figure 12)



Fig.12

15. From the stock head pipe assembly, remove the circlips and mounting flanges to reuse with the new system. Be sure to replace any reused hardware that is worn or damaged before installing your Magnaflow motorcycle exhaust system.

16. Remove the stock exhaust gaskets and replace with flat, H-D Screaming Eagle® style exhaust gaskets or equivalent.

1. Install the factory mounting flanges and circlips, removed from the factory system, on the new head pipes. (Figure 1)



Fig.1

2. Install the head pipe assembly to the exhaust ports using the factory exhaust port nuts. Do not tight the nuts at this time to allow for adjustment (Figure 2)

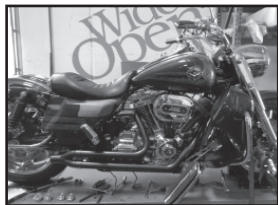


Fig.2

3. Align the mounting bracket on the head pipes assembly with the factory transmission bracket and attach using the factory 3/8 inch carriage bolt and nut. Do not tighten at this time. (Figure 3)



Fig.3

4. Carefully install the factory O2 sensors into the new head pipes.
5. Insert the supplied heat shield clamps to the heat shields by inserting the end of the clamp through the retaining bracket (Figure 4).



Fig.4

6. Attach the front and rear heat shields to the head pipe assembly by using the heat shield clamps. Do not tighten the clamps at this time to allow for adjustment. (Figure 5)



Fig.5

7. Install the Y-collector heat shield by sliding the front retaining clips inside the head pipe heat shields, then attaching the 2.25 inch heat shield clamp to the Y-collector. Do not tighten at this time to allow for adjustment.
8. Install the inlet end of the muffler assembly by sliding on to the Y-collector using the 2.25 inch muffler clamp. Bolt the muffler to the mount on rear bar bag bracket by using the 1/2 inch bolts supplied in kit. Do not tighten the bolts at this time to allow for adjustment. (Figure 6a,6b)

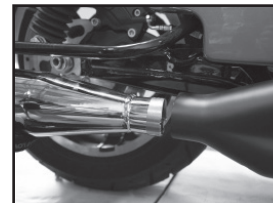


Fig.6a

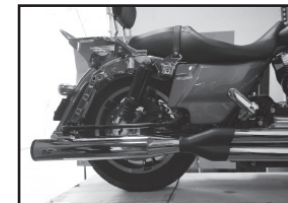


Fig.6b

9. Adjust the exhaust system as necessary and tighten the nuts, bolts, and clamps in the following order: head flange nuts, Y-collector muffler clamp, muffler and head pipe mounting bracket, then front and rear heat shields and Y heat shield clamps.
10. Install the floor board spacers using the provided 3/8-16 x 3.00 inch and 3/8-16 x 1.50 inch bolts and factory hardware. (Figure 7a,7b).



Fig.7a

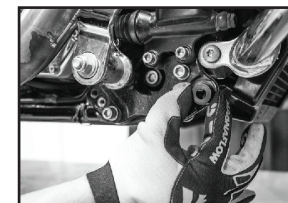


Fig.7b

11. Re-route and plug in the O2 wiring harnesses. Install the supplied cable tie on the front O2 wire harness at its original location.
12. Before starting the motorcycle, make sure to check that all of the exhaust components including O2 wiring have been properly installed and have proper clearance to avoid damage. Make sure that all hardware has been tightened to factory specifications.